



**amendpohlig**

# **Light Sculptures - Sculptures**

- Forms of nature in timeless originality -

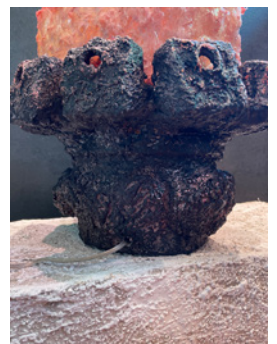
Content: 8 light sculptures - 7 sculptures  
from the series Light Growth



From the series

## LIGHT GROWTH

Light sculpture: LG X-51-G



**Sculpture:** Paint on Mixed Media

**Material:** Mixture of Fine Stone Granulation, Lime and Plaster  
Upcycling Cardboard and Plastics for environmental protection  
The light sculpture is unique.

**WorkNo:** LG X-51-G

**Size:** 40 W x 42H x 35 D cm

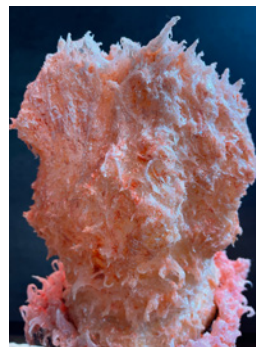
incl. LED/RGB I color change bulb 60W with remote control



From the series

## LIGHT GROWTH

Light sculpture: LG X-52-G



**Sculpture:** Paint on Mixed Media

**Material:** Mixture of Fine Stone Granulation and Plaster  
Upcycling Cardboard and Plastics for environmental protection  
The light sculpture is unique.

**WorkNo:** LG X-52-G

**Size:** 26 W x 56 H x 23 D cm

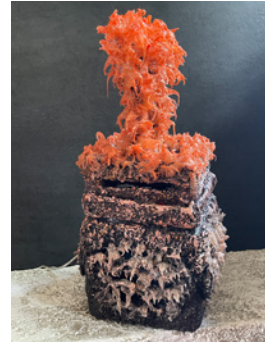
incl. LED/RGB I color change bulb 60W with remote control



From the series

## LIGHT GROWTH

Light sculpture: LG X-53-G



**Sculpture:** Paint on Mixed Media

**Material:** Mixture of Fine Stone Granulation, Lime and Plaster  
Upcycling Cardboard and Plastics for environmental protection  
The light sculpture is unique.

**WorkNo:** LG X-53-G

**Size:** 28 W x 53 H x 32 D cm

incl. LED/RGB I color change bulb 60W with remote control



From the series

## LIGHT GROWTH

Light sculpture: LG X-54-G



**Sculpture:** Paint on Mixed Media

**Material:** Mixture of Fine Stone Granulation and Plaster  
Upcycling Cardboard and Plastics for environmental protection  
The light sculpture is unique.

**WorkNo:** LG X-54-G

**Size:** 23 W x 48 H x 32 D cm

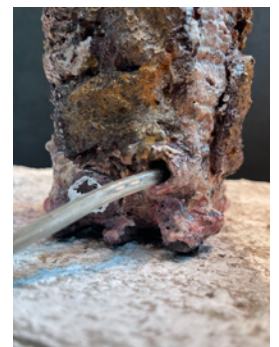
incl. LED/RGB I color change bulb 60W with remote control



From the series

## LIGHT GROWTH

Light sculpture: LG X-55-G



**Sculpture:** Paint on Mixed Media

**Material:** Mixture of Fine Stone Granulation and Plaster  
Upcycling Cardboard and Plastics for environmental protection  
The light sculpture is unique.

**WorkNo:** LG X-55-G

**Size:** 20 W x 49 H x 19 D cm

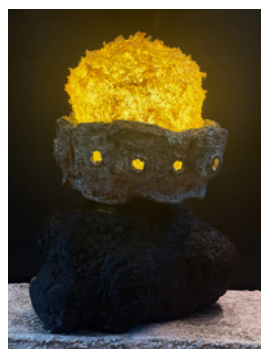
incl. LED/RGB I color change bulb 60W with remote control



From the series

## LIGHT GROWTH

Light sculpture: LG X-56-G



**Sculpture:** Paint on Mixed Media

**Material:** Mixture of Fine Stone Granulation and Plaster  
Upcycling Cardboard and Plastics for environmental protection  
The light sculpture is unique.

**WorkNo:** LG X-56-G

**Size:** 47 W x 53 H x 33 D cm

incl. LED/RGB I color change bulb 60W with remote control



From the series

## LIGHT GROWTH

Light sculpture: LG X-57-G



**Sculpture:** Paint on Mixed Media

**Material:** Mixture of Fine Stone Granulation and Plaster  
Upcycling Cardboard and Plastics for environmental protection  
The light sculpture is unique.

**WorkNo:** LG X-57-G

**Size:** 24 W x 43 H x 23 D cm

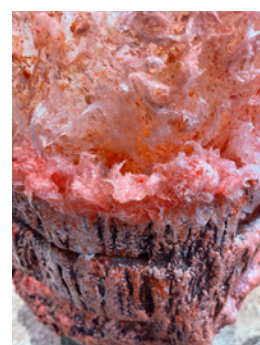
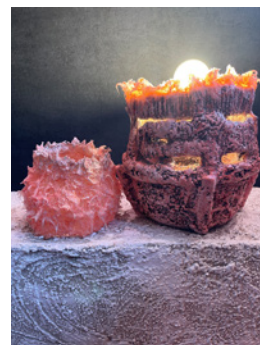
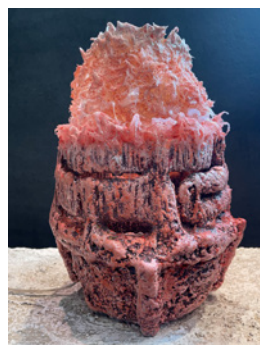
incl. LED/RGB I color change bulb 60W with remote control



From the series

## LIGHT GROWTH

Light sculpture: LG X-58-G



**Sculpture:** Paint on Mixed Media

**Material:** Mixture of Fine Stone Granulation and Plaster  
Upcycling Cardboard and Plastics for environmental protection  
The light sculpture is unique.

**WorkNo:** LG X-58-G

**Size:** 29 W x H 36 x 28 D cm

incl. LED/RGB I color change bulb 60W with remote control





**amendpohlig**

# **Sculptures**

- Forms of nature in timeless originality -

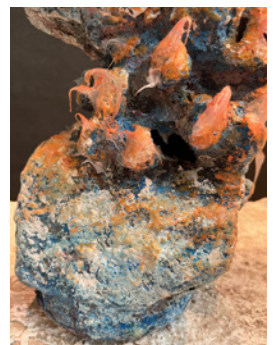
Content: 7 sculptures  
from the series Light Growth



From the series

## LIGHT GROWTH

Sculpture: LG X-72-G



**Sculpture:** Paint on Mixed Media

**Material:** Mixture of Fine Stone Granulation and Plaster  
Upcycling Cardboard and Plastics for environmental protection  
The sculpture is unique.

**WorkNo:** LG X-72-G

**Size:** 29 W x 39 H x 16 D cm



From the series

## LIGHT GROWTH

Sculpture: LG X-73-G



**Sculpture:** Paint on Mixed Media

**Material:** Mixture of Fine Stone Granulation and Plaster  
Upcycling Cardboard and Plastics for environmental protection  
The sculpture is unique.

**WorkNo:** LG X-73-G

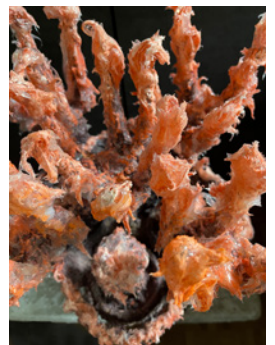
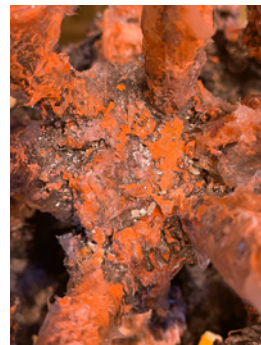
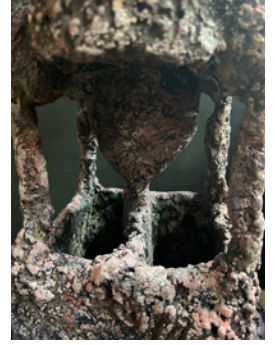
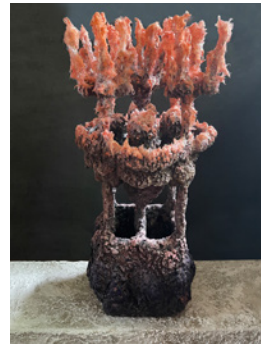
**Size:** 17 W x 21 H x 13 D cm



From the series

## LIGHT GROWTH

Sculpture: LG X-71-G



**Sculpture:** Paint on Mixed Media

**Material:** Mixture of Fine Stone Granulation and Plaster  
Upcycling Cardboard and Plastics for environmental protection  
The sculpture is unique.

**WorkNo:** LG X-71-G

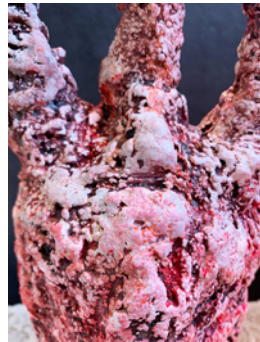
**Size:** 35 W x 65H x 34 D cm



From the series

## LIGHT GROWTH

Sculpture: LG X-74-G



**Sculpture:** Paint on Mixed Media

**Material:** Mixture of Fine Stone Granulation and Plaster  
Upcycling Cardboard and Plastics for environmental protection  
The sculpture is unique.

**WorkNo:** LG X-74-G

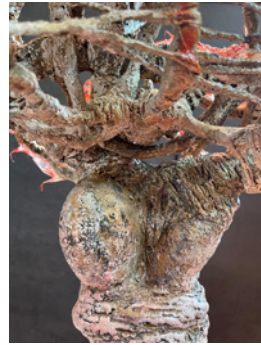
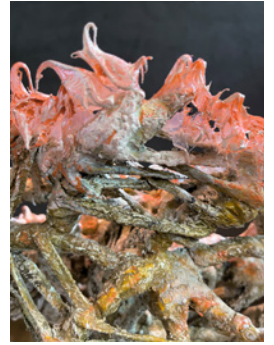
**Size:** 16 W x 54 H x 15 D cm



From the series

## LIGHT GROWTH

Sculpture: LG X-75-G



**Sculpture:** Paint on Mixed Media

**Material:** Mixture of Fine Stone Granulation and Plaster  
Upcycling Cardboard and Plastics for environmental protection  
The sculpture is unique.

**WorkNo:** LG X-75-G

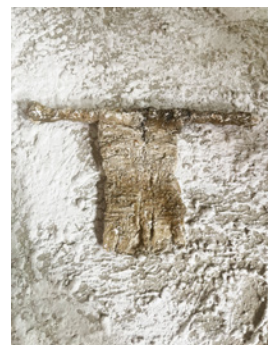
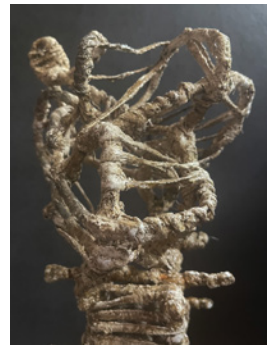
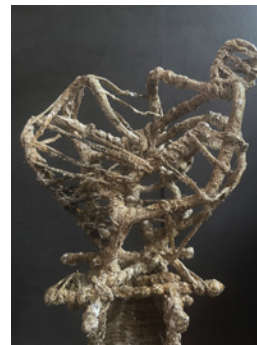
**Size:** 33 W x 46 H x 19 D cm



From the series

## DOCK

Sculpture:D O-81-0



**Sculpture:** Paint on Mixed Media

**Material:** Mixture of Fine Stone Granulation and Plaster  
Upcycling Cardboard and Plastics for environmental protection

The sculpture is unique.

**WorkNo:** D O-81-0

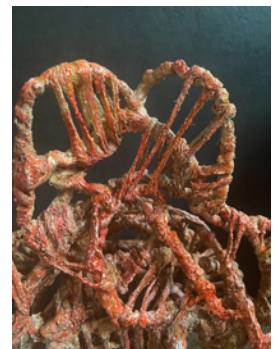
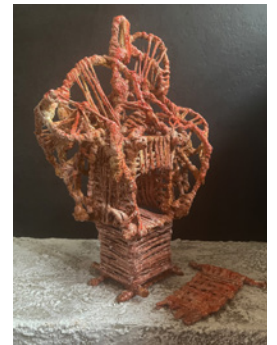
**Size:** 21 W x 40 H x 19 D cm



From the series

## DOCK

Sculpture:D 0-82-0



**Sculpture:** Paint on Mixed Media

**Material:** Mixture of Fine Stone Granulation and Plaster  
Upcycling Cardboard and Plastics for environmental protection

The sculpture is unique.

**WorkNo:** D 0-82-0

**Size:** 33 W x 41 H x 20 D cm



# KERSTIN AMEND-POHLIG

\_home\_atelier



**To conceive and develop something unusual, something unconventional and to bring it into a positive form is a constant challenge - a never-ending story.**

With this conviction, Kerstin A.P. approaches again and again anew with a variety of different techniques and materials to the development and implementation of their ideas and concepts. Organic light sculptures are created, sculptures in timeless originality, in which joie de vivre always resonates.

Kerstin Amend-Pohlig deals with the phenomena of simultaneity and timelessness - with the traces and timelessness - with the traces that the past leaves in the present. She creates organic light sculptures and sculptures, in which the joy of life always resonates. always resonates.

Massively solid materials such as stone and iron and a material mixture of plaster, lime and fine-grained stone are made malleable with cardboard and plastics.

The ideas, first fixed in thought and sketch, are followed by a first loose shaping. Through impulses during the making, the clear shape emerges. In all layers and form areas is tapped with the hands in subtle color mixing acrylic, rubbed, pasty and glazed dabbed. The painting technique strongly determines the interplay and the expression of the sculptures and objects.

In the current - very extensive - sculpture series LICHTWUCHS/LIGHT GROWTH emerging consequences of global human activity and the resulting trends of our time are processed in meaning processes.

The worldwide actual state animates the creation of this sculpture series. As illuminated and self-luminous bearers of hope - thus fixed in their name, the sculptures insist on turning towards the positive and the inherent success therein.

Kerstin Amend-Pohlig born in Wiesbaden is a designer and artist. Her fields of work include light sculpture - sculpture - graphics - edition - project - relief and painting. Her work combines analog, digital techniques and sculptural design.